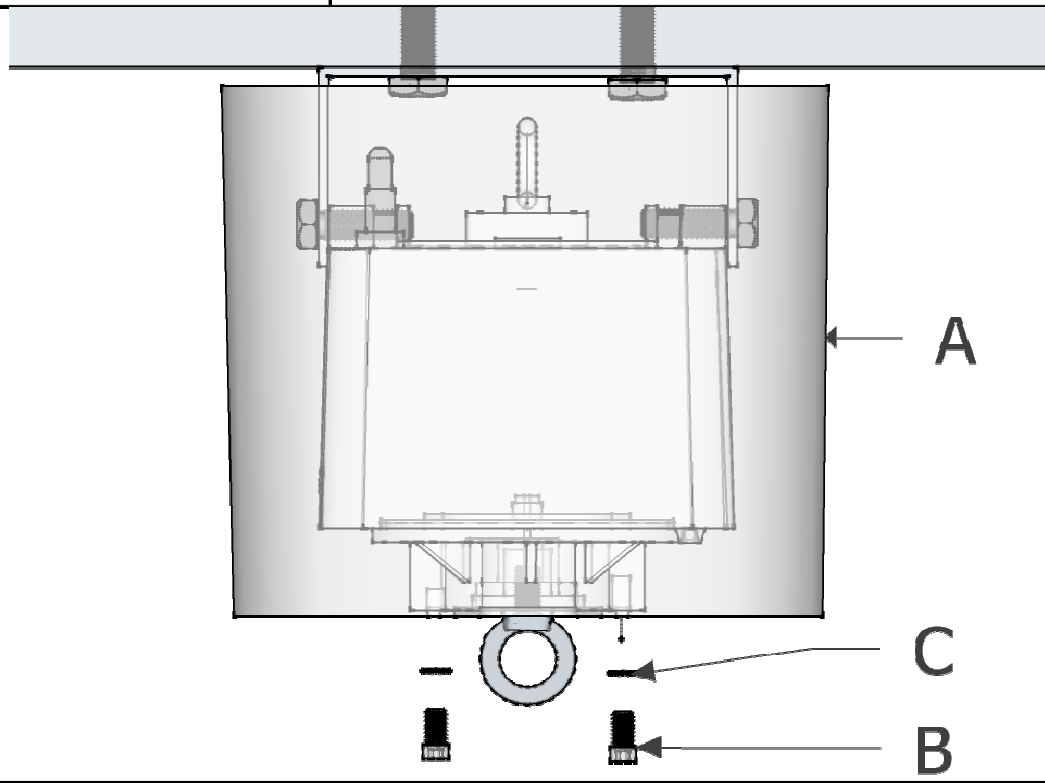




AH-M AH-AN AH-B AH-C	<b>Montageanleitung - Abdeckhaube AH</b> <b>Assembly instructions - surface cover</b>
-------------------------------	--



Component	Figure	Beschreibung / Description	Menge Amount
A		AH-M = Lifftype MSI, MDI AH-AN = Lifftype CSI, CDI AH-B = Lifftype HDI AH-C = Lifftype PSI, PDI	1
B		Innenschkantschraube hexagon socket screw M5 x 12mm	2
C		Fächerscheibe washer ribbed M5	2

**Benötigtes Werkzeug / needed tools**

<p style="text-align: center;">Drehmoment- schlüssel - Einsatz socket</p> 	<p style="text-align: center;">Innenschkant - Schlüssel allen key</p>  <p style="text-align: center;">3</p>
---	--

