

## Super Heavy Duty Type

For loads over 50kg and up to 30m high the Super Heavy Duty series are used. This range is characterized by its quietness and a robust technology. Drive and control procedures are carried out in duplicate using two motors. Dual cable guides result in an extremely precise and reliable rotating 4-fold suspension. The operating speed has been adjusted so that acceleration and applied forces during lifting and lowering are kept extremely low, making it ideal for sensitive loads like chandeliers.

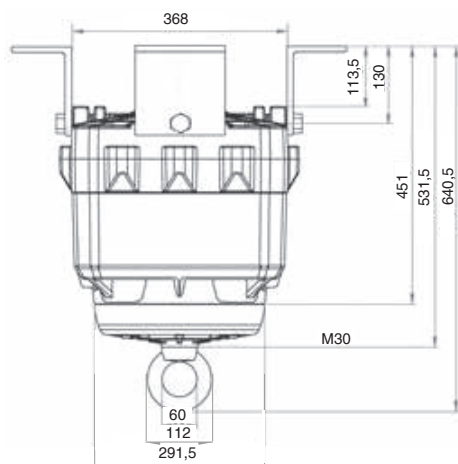
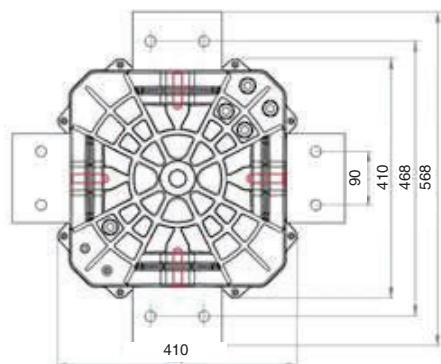


Should lowering distances of more than 30m be required it is possible to connect two lifts in tandem.

Super Heavy Duty Type	PFI-100	PFI-200	PFI-300	PFI-500	PFI-1000
Lifting capacity	50-100 kg	60-200 kg	100-300 kg	100-500 kg	500-1000 kg
Lowering distance	20 m / 30 m	20 m	20 m	15 m	10 m
Suspension cable	2x dual				
Motor supply and lighting circuit	separate				
Power supply motor	230V AC/50Hz; 300W		230V AC/50Hz; 400W		
Circuits switched / capacity	2/16A, 230V AC				
Auxiliary contacts / capacity	4/16A, 230V AC				
Protection category / class	IP 54/I				
Temperature range	-15 °C to + 60 °C				
Net weight / with packaging	53/58 kg	53/58 kg	59/64 kg	62/67 kg	75/81 kg

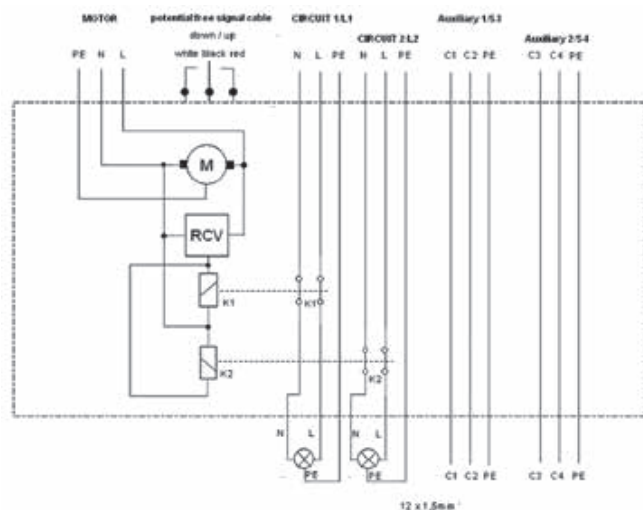
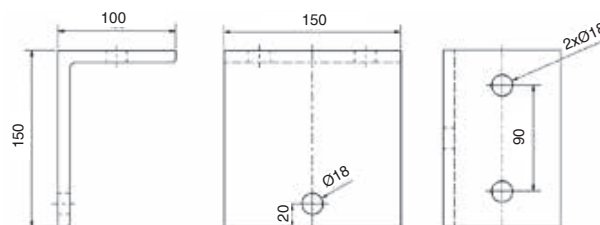
## Technical Information

The Super Heavy Duty series have 2 separate circuits and 4 auxiliary contacts. The motor and lighting circuits have their own supply cables to allow individual circuit protection or integration into existing safety circuits.



### Mounting kit MB-D

For Super Heavy Duty type, consists of 4 x 150 x 100 x 150 x 10 mm; angle brackets 4 M16 bolts



### WR PFI dummy weight holder

WR PFI holds 5 x 20 kg dumbbell weights. 170mm ø x 340mm height. White, RAL 9010. Weights not supplied.

